

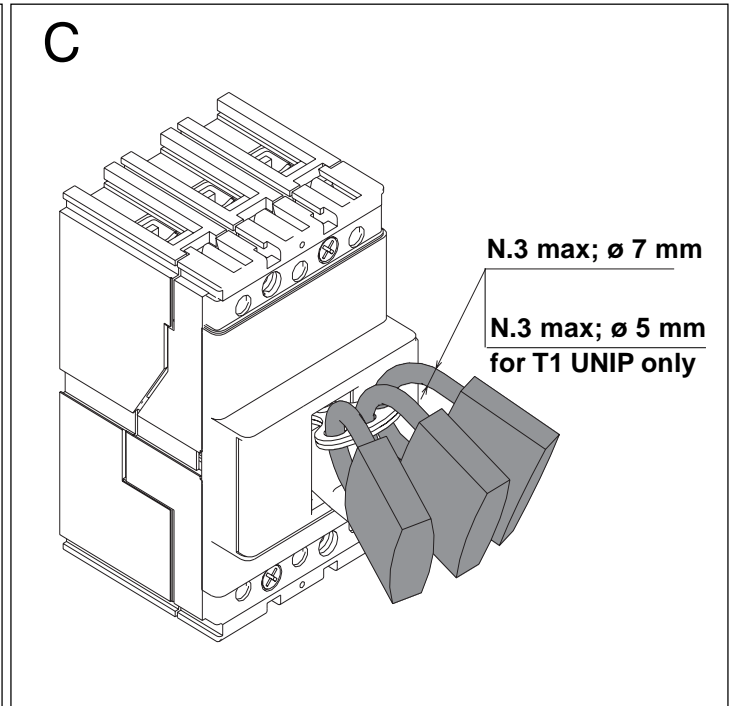
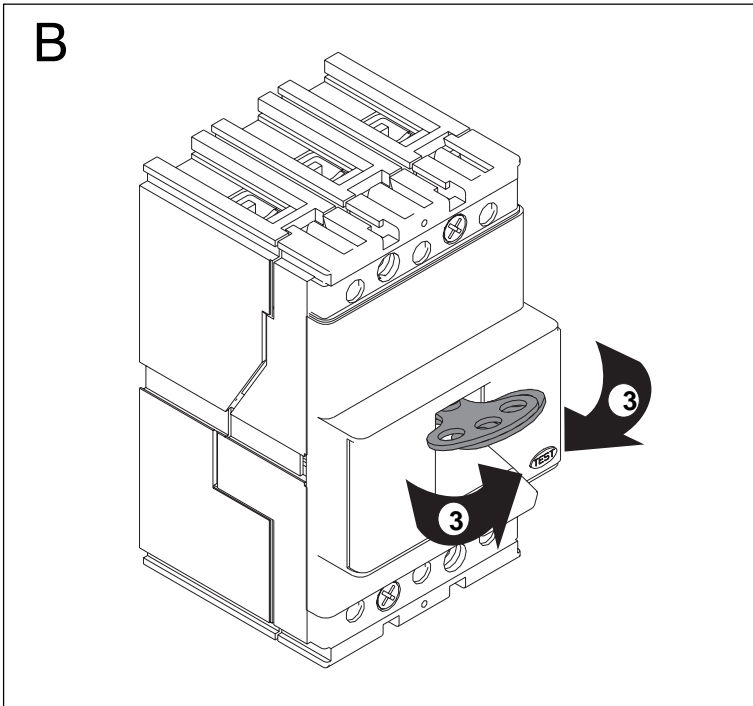
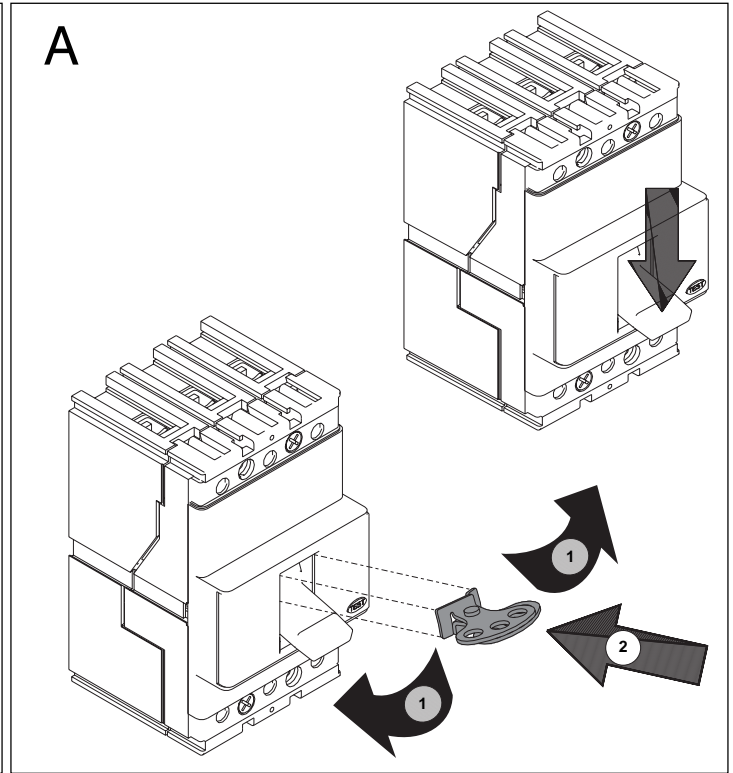
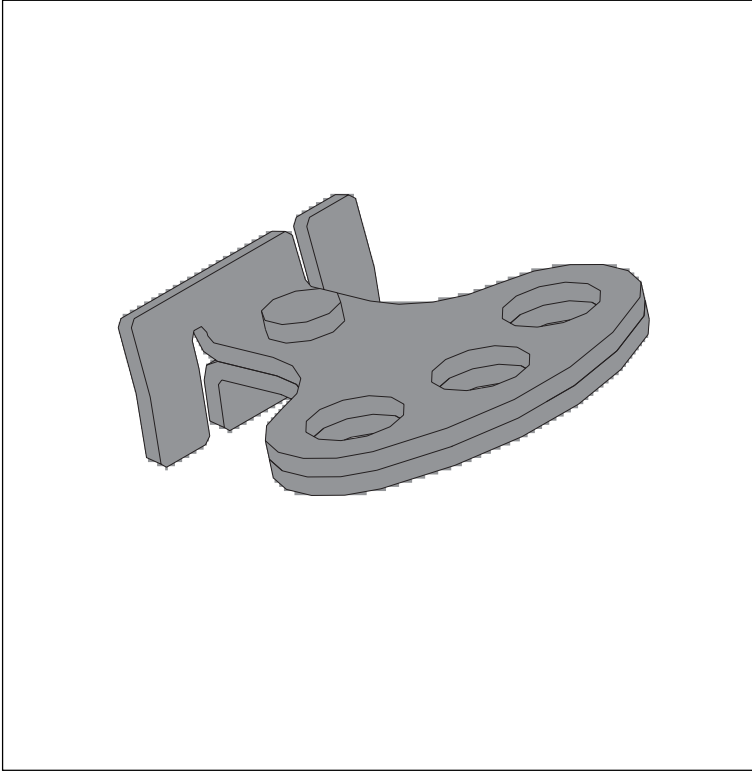
PLL - Blocco a lucchetti T1 UNIP-T1-T2-T3 in aperto.

PLL - Padlock device T1 UNIP-T1-T2-T3 in open position .

PLL - Schlobverriegelung T1 UNIP-T1-T2-T3 für ausgeschaltet.

PLL - Verrouillage par cadenas T1 UNIP-T1-T2-T3 en position ouverte.

PLL - Bloqueo por candados T1 UNIP-T1-T2-T3 en posición de abierto.



The ABB logo, consisting of the letters 'ABB' in a bold, red, sans-serif font.

ABB SACE S.p.A.

Via Baioni, 35

24123 Bergamo

Tel.: +39 035 395.111 - Telefax: +39 035 395.306-433

<http://www.abb.com>