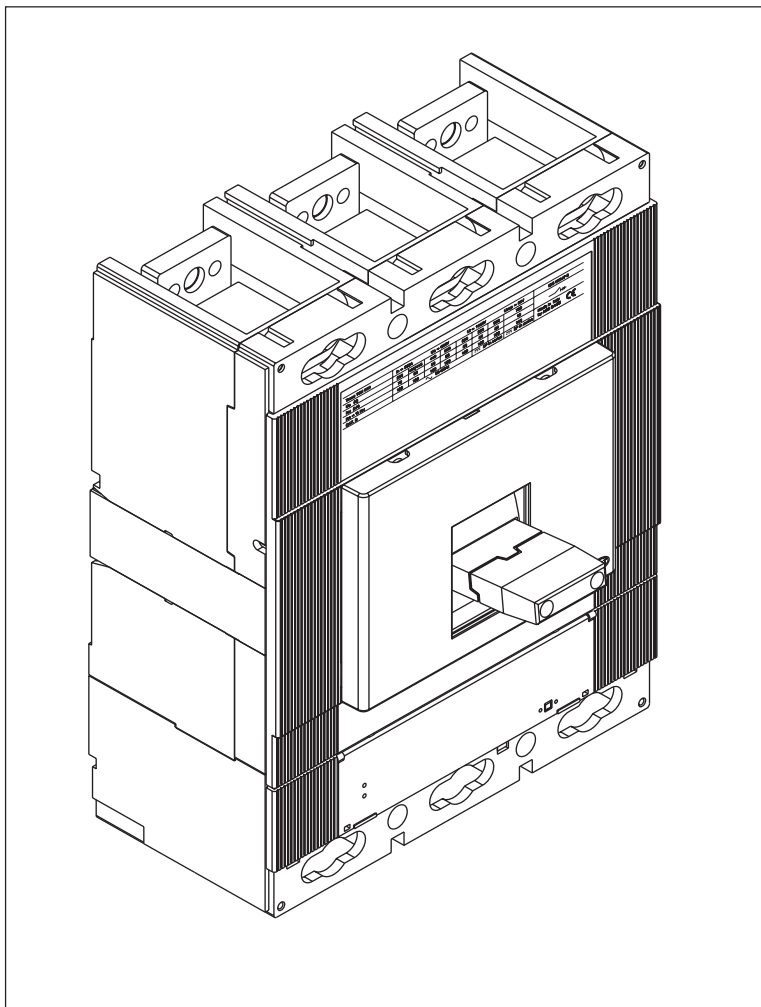


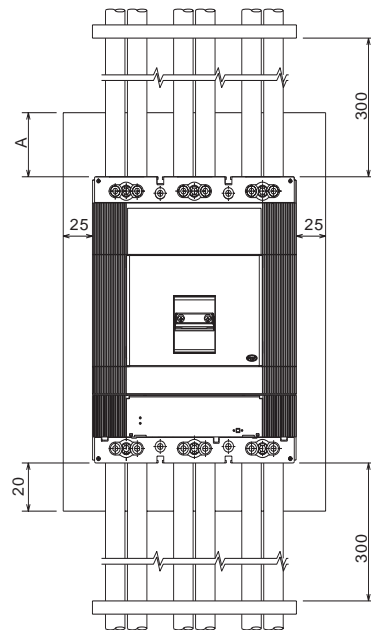
Tmax T6 630-800

DOC. N.° 1SDH000511R0001

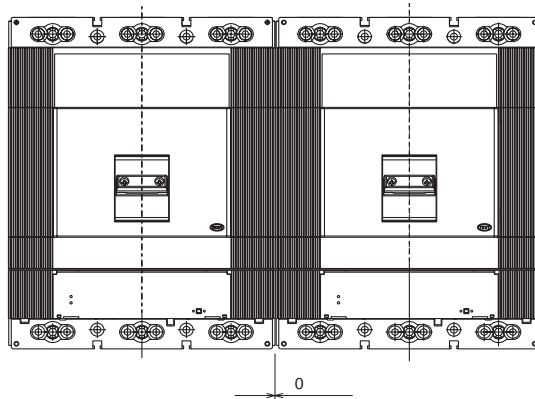
- L2398



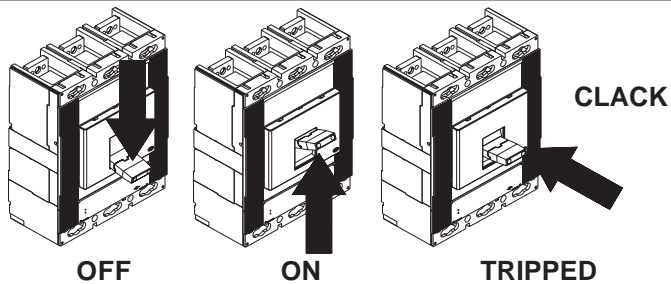
1



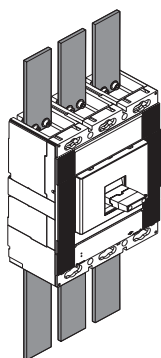
Ue	A (T6N, T6S, T6H)	A (T6L)
< 440 V	35	100
≥ 440 V	100	100
≤ 690 V	100	100
750 V	100	100



2

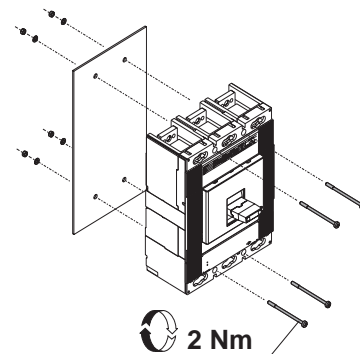


3

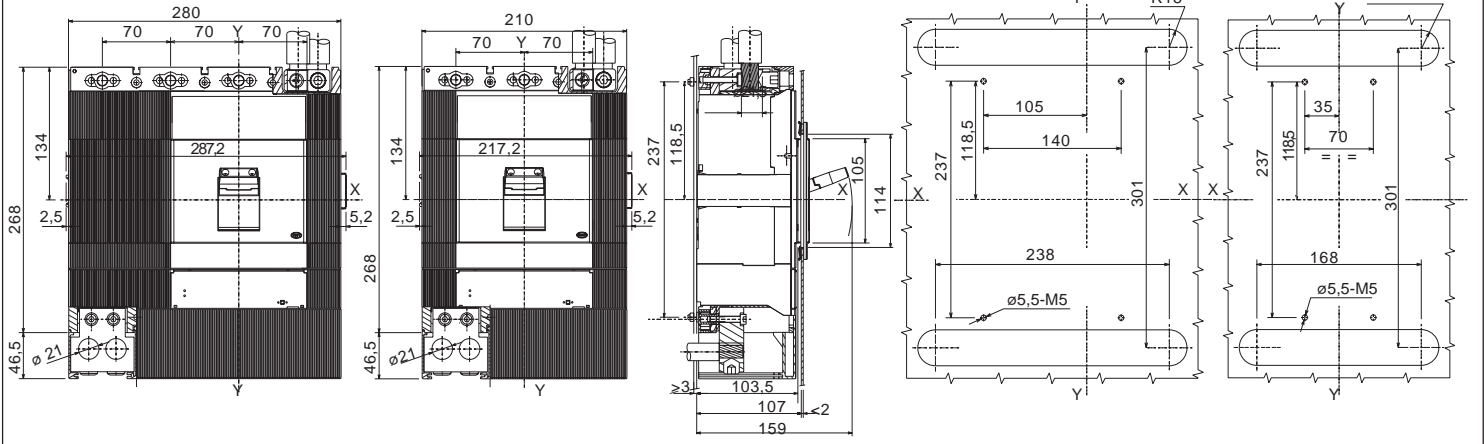


Usare cavi o barre isolate/ o eseguire prove di tipo specifiche sull' installazione.
 Use cable or insulated busbars/ or perform specific type test on the installation.
 Kabel oder isolierte Sammelschienen verwenden / oder die spezifische Typprüfung auf der Installation durchführen.
 Utiliser un câble ou des barres isolées/ ou réaliser un test de type spécifique sur installation.
 Utilizar un cable o barras aisladas / o efectuar una prueba de tipo específico sobre instalación.

4



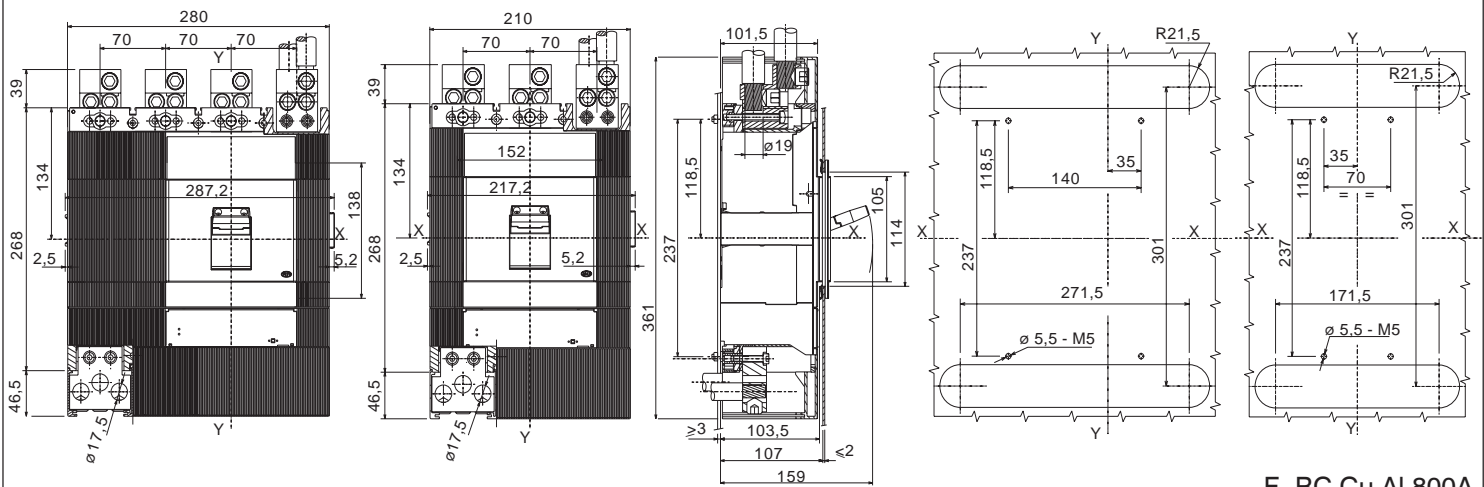
5



F - FC Cu Al 630A

F - RC Cu Al 630A

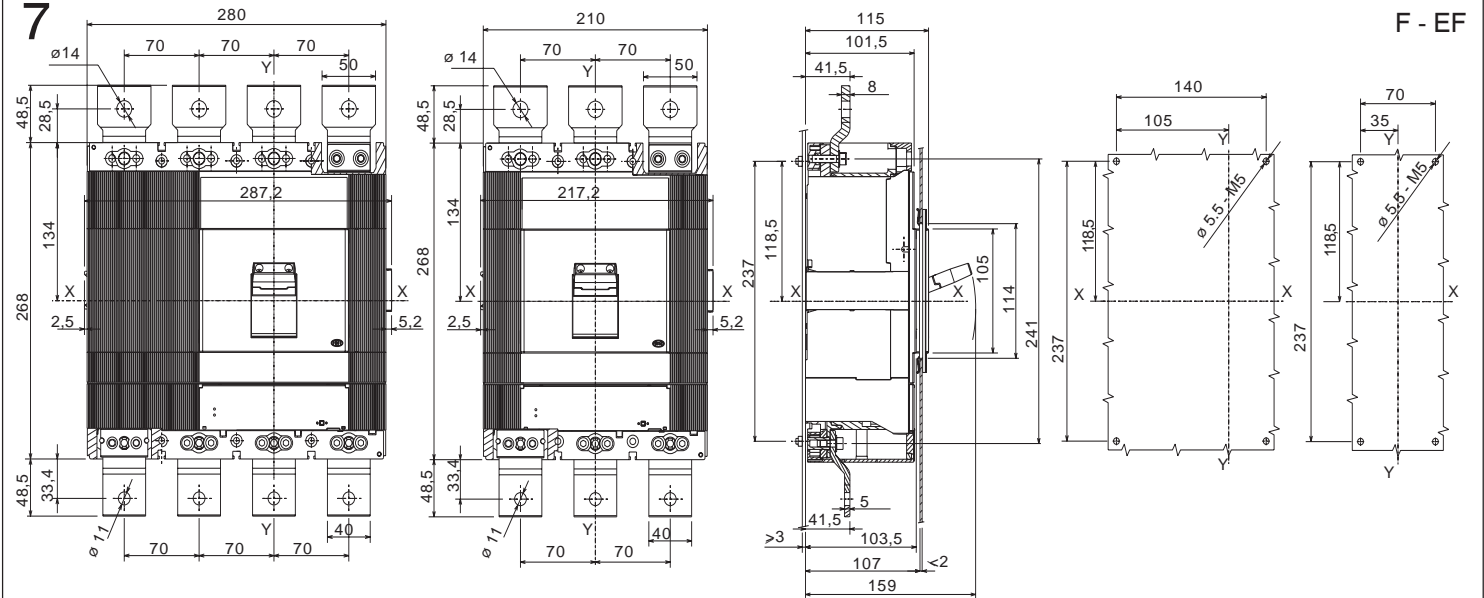
6



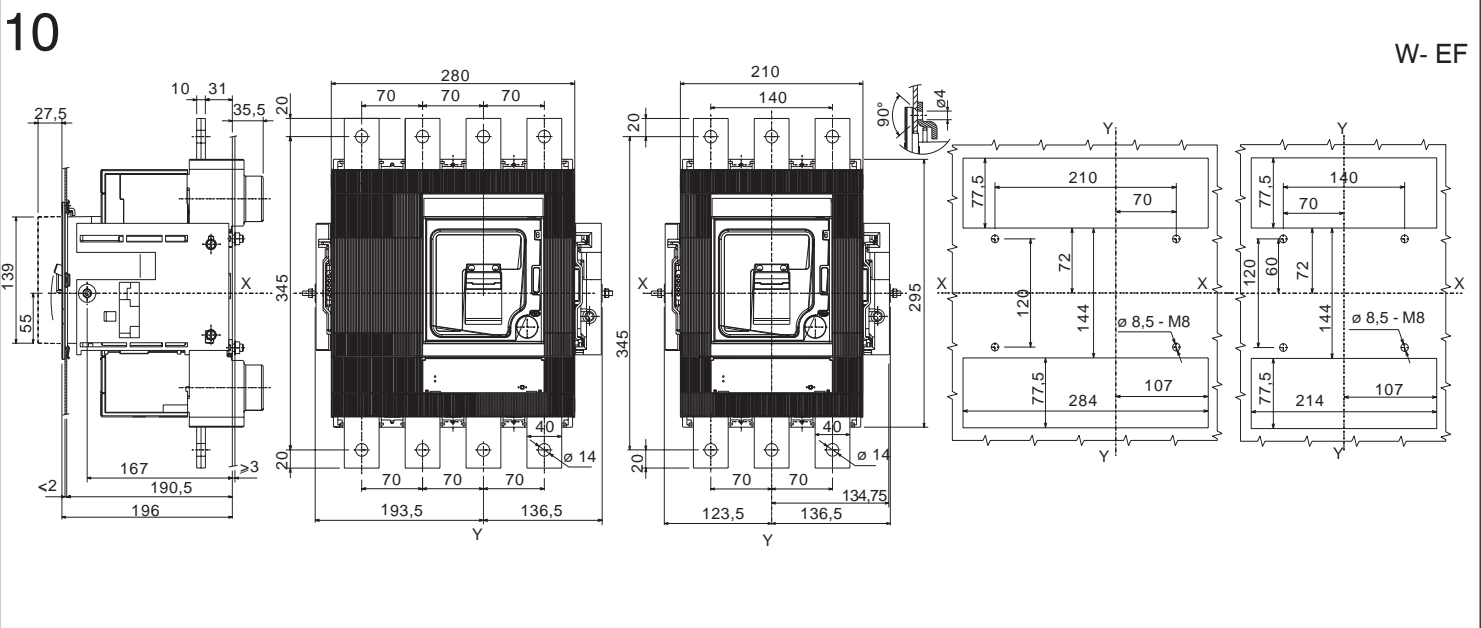
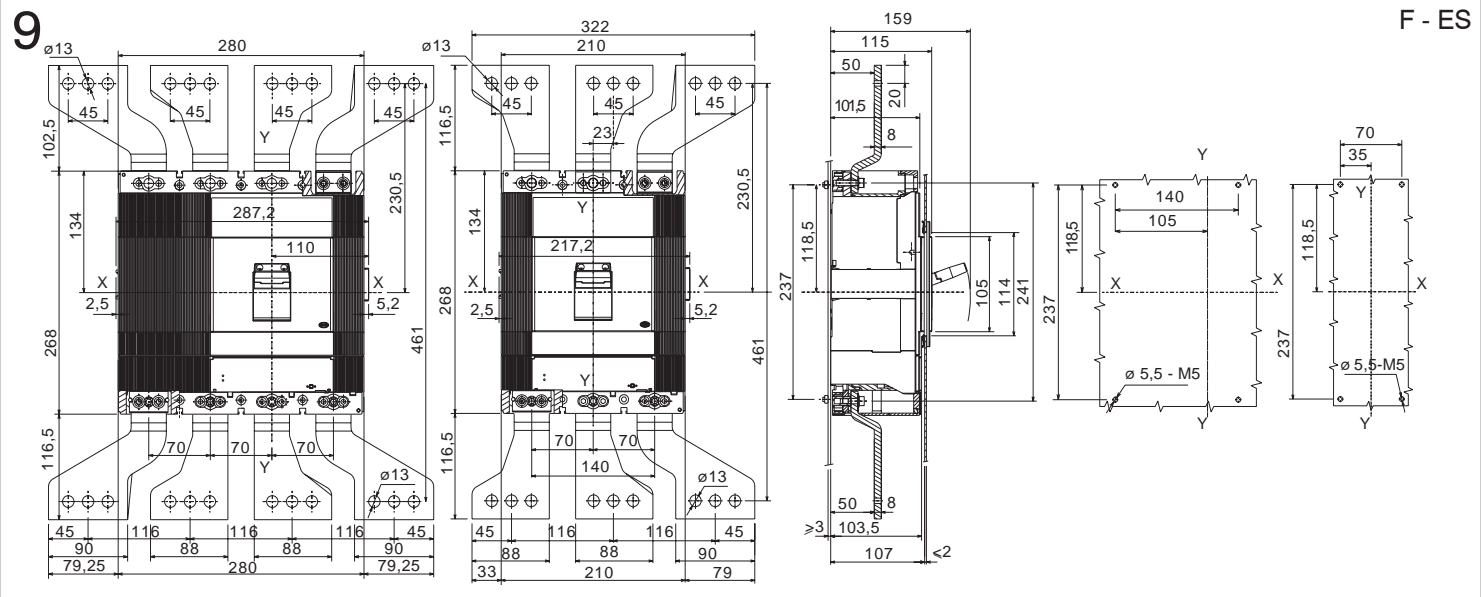
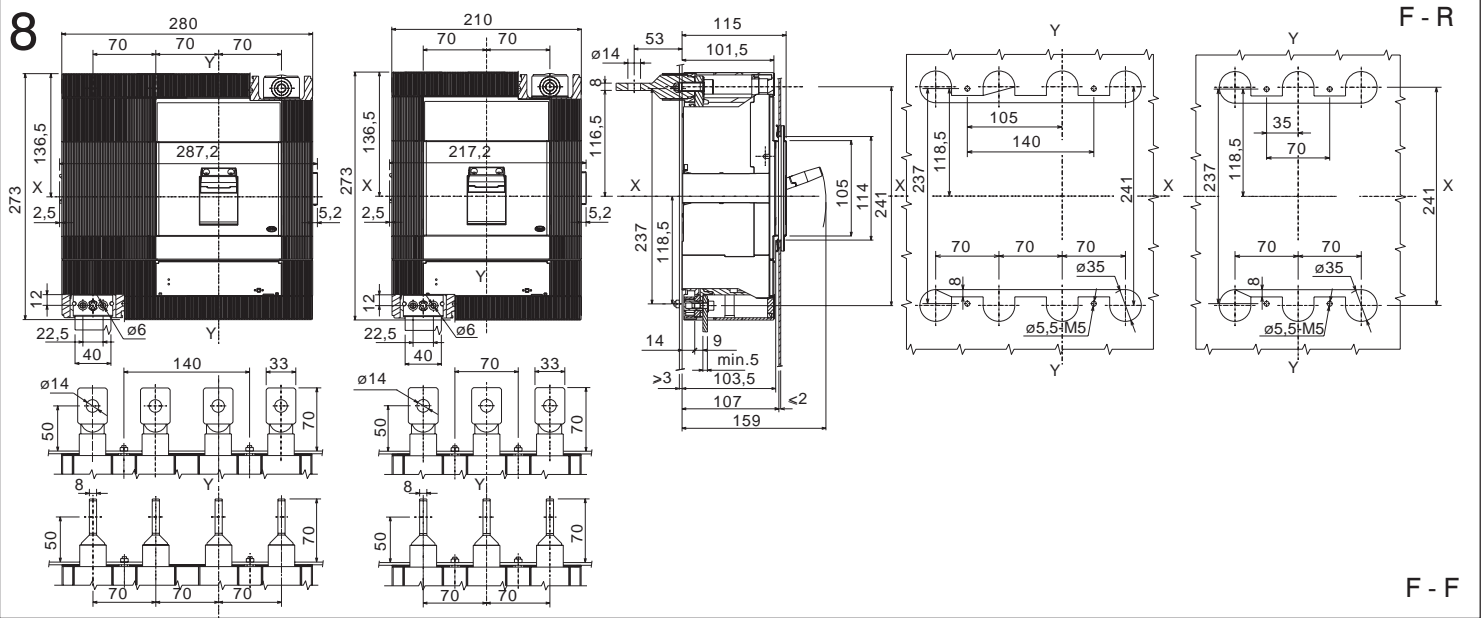
F - FC Cu Al 800A

F - RC Cu Al 800A

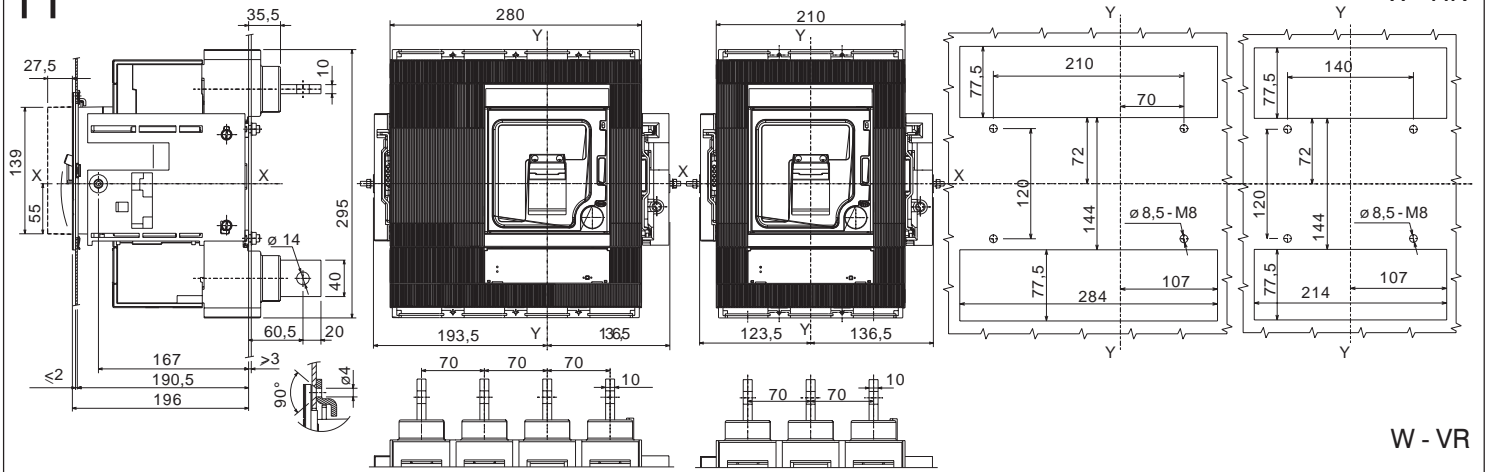
7



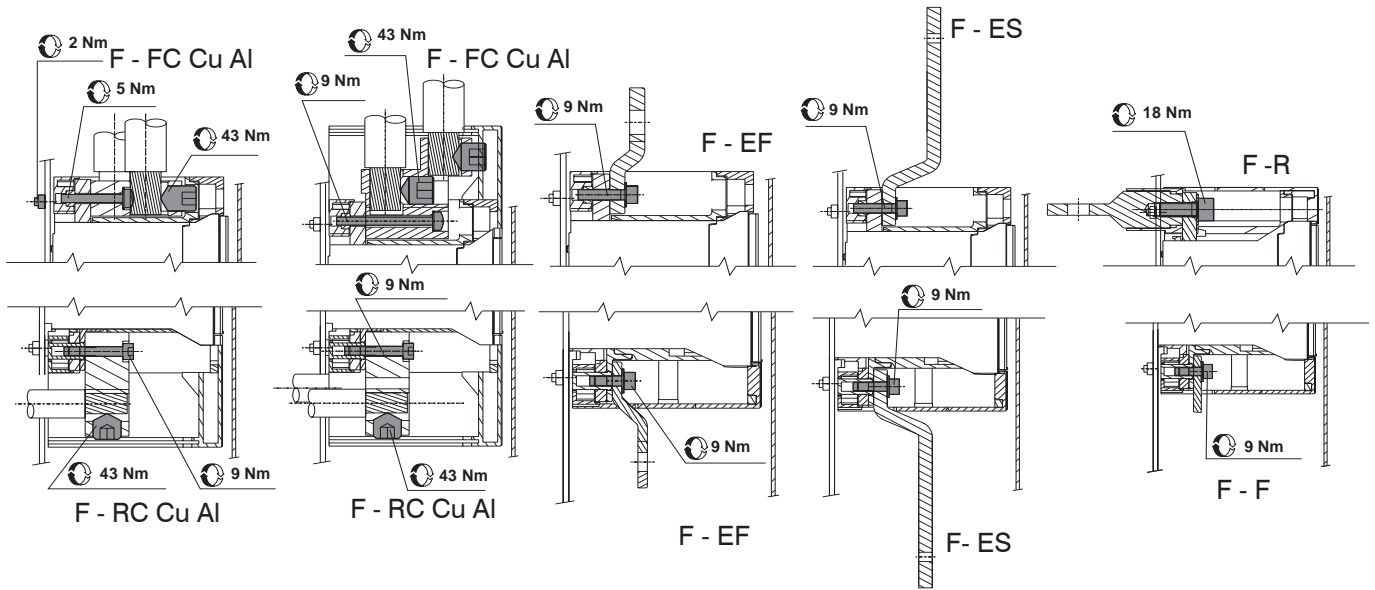
F - EF



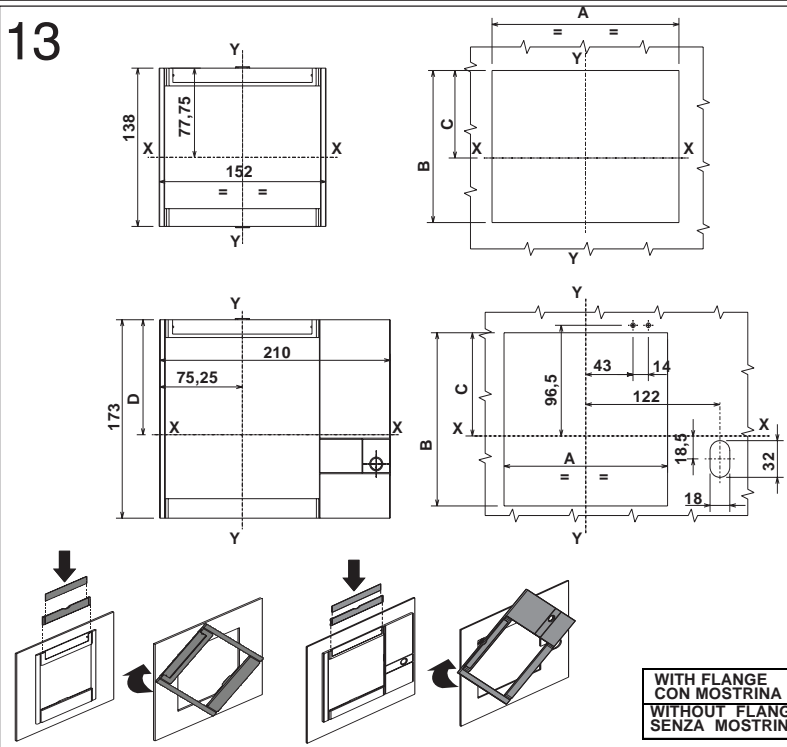
11



12



13



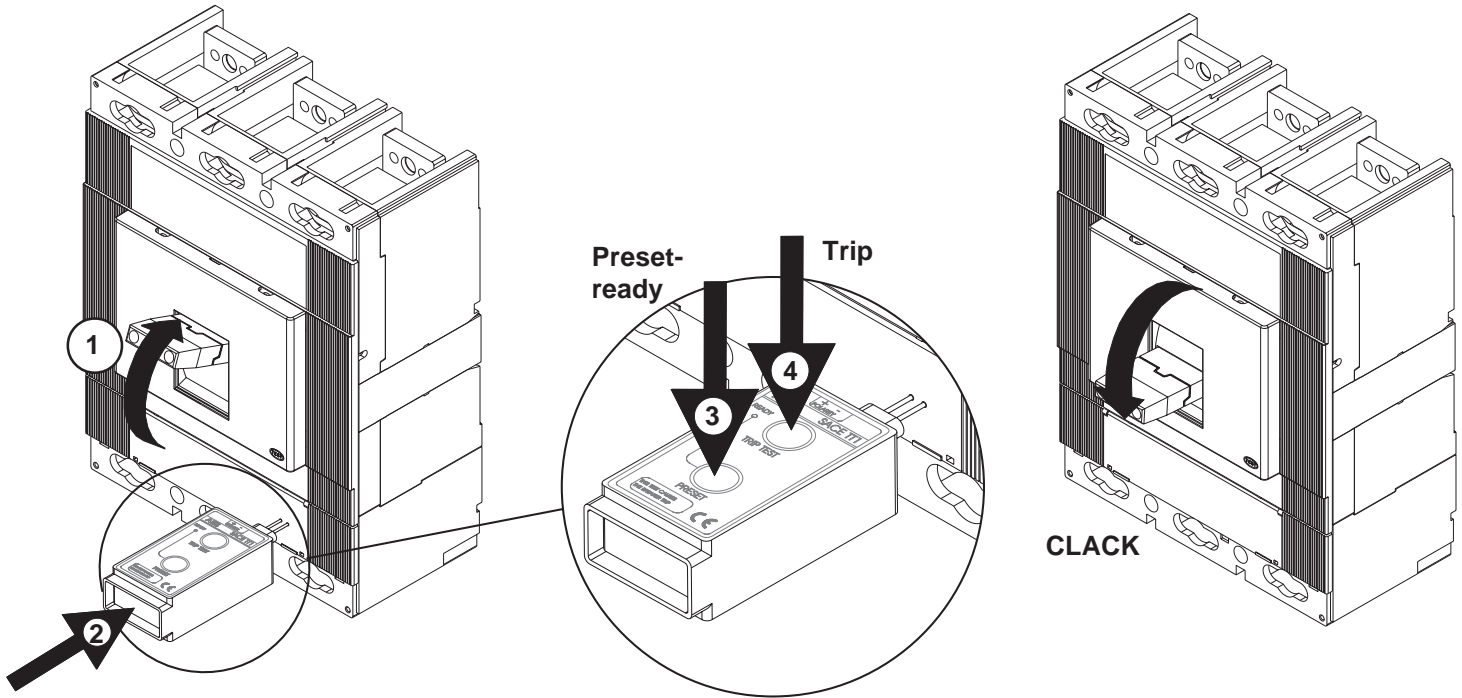
Non valido per interruttore fisso con RHD-FLD-MOE.
 Vedere documentazione specifica.
 Not valid for fixed circuit breakers with RHD-FLD-MOE.
 See specific documentation.
 Gilt nicht für festen Leistungsschalter mit RHD-FLD-MOE.
 Siehe die spezifische Dokumentation.
 Non valable pour disjoncteur fixe avec RHD-FLD-MOE.
 Voir la documentation spécifique.
 No válido para interruptor fijo con RHD-FLD-MOE.
 Véase documentación específica.

	A	A	B	B	C	C	C	D	D
	FISSO FIXED	ESTRAIBILE WITHDRAWABLE	FISSO FIXED	ESTRAIBILE WITHDRAWABLE	FISSO FIXED	ESTRAIBILE WITHDRAWABLE	W CON MOTORE W WITH MOTOR	W CON MOTORE W WITH MOTOR	ESTRAIBILE WITHDRAWABLE
WITH FLANGE CON MOSTRINA	149	148,5	116	150	66,75	89,5	75,25	89,25	100,25
WITHOUT FLANGE SENZA MOSTRINA	142	-	107	-	62,25	-	-	-	-



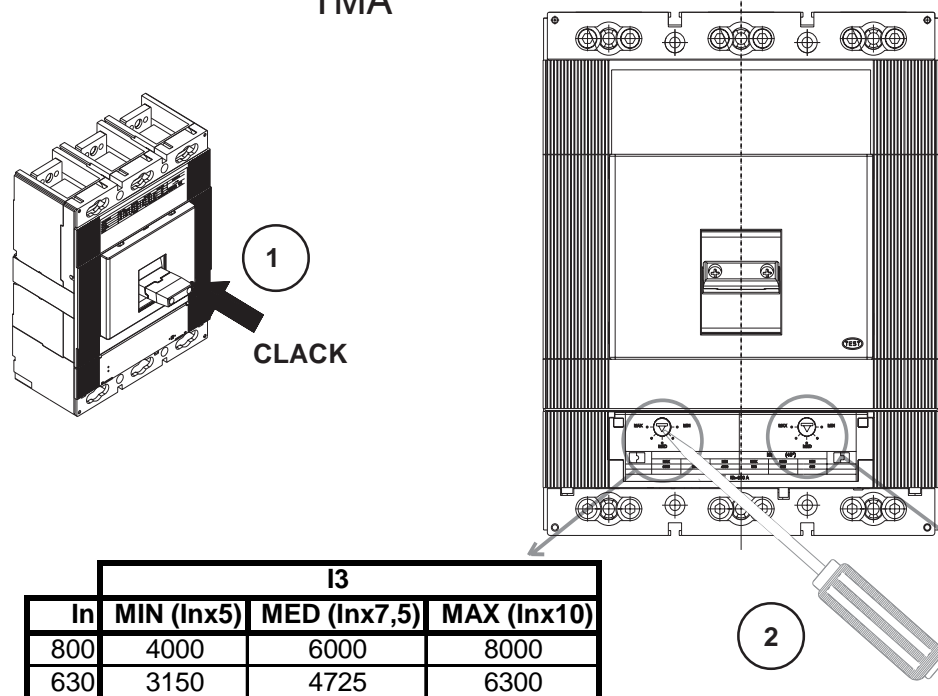
14

TRIP TEST



15

TMA

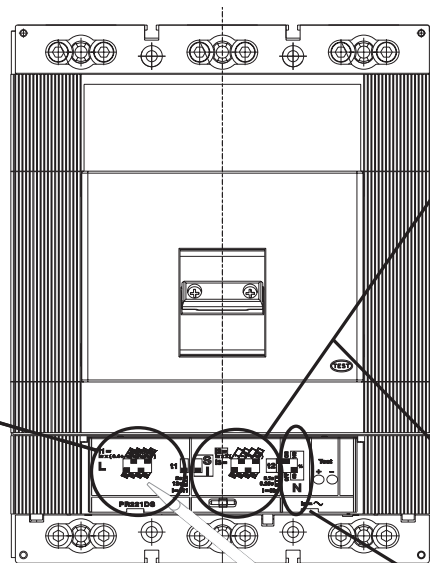
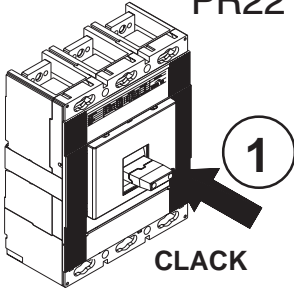


I3			
In	MIN (Inx5)	MED (Inx7,5)	MAX (Inx10)
800	4000	6000	8000
630	3150	4725	6300

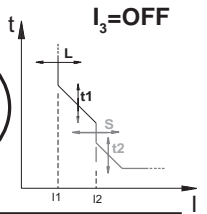
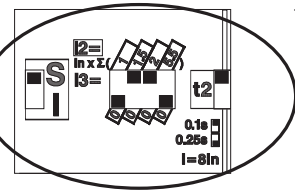
I1			
In	MIN (0,7)	MED (0,85)	MAX (1xIn)
800	560	680	800
630	441	536	630



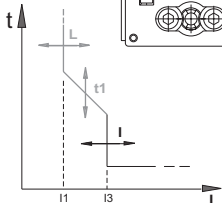
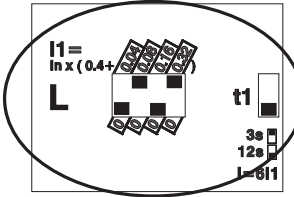
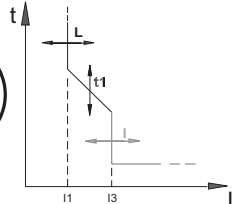
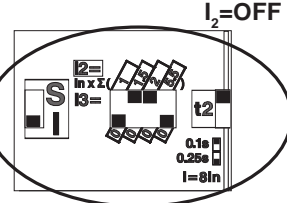
PR221DS



Esempio: $I_n=630A$
 Example: $I_2 = 630 \times (1,5+2)=2205A$
 $t_2 = 0,1 \text{ s @ } 5040 \text{ A } (8I_n)$



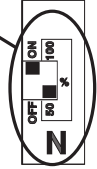
Esempio: $I_n=630 \text{ A}$
 Example: $I_3 = 630 \times (1,5+2)=2205A$



Esempio:
 Example:

$I_n = 630 \text{ A}$
 $I_1 = 630 \times (0,4+0,08+0,32) = 504A$
 $t_1 = 12 \text{ s @ } 3024 \text{ A } (6I_n)$

2



Esempio:
 Example:
 $Ne=ON ; 50\%$



ABB SACE S.p.a.

Via Baioni, 35

24123 Bergamo Italy

Tel. +39 035 395.111 - Telefax +39 035 395.306-433

<http://www.abb.com>